



# ELIZABETH MACARTHUR RESERVE

## PLAYGROUND UPGRADE CONCEPT

---

TELOPEA

NOVEMBER 2025



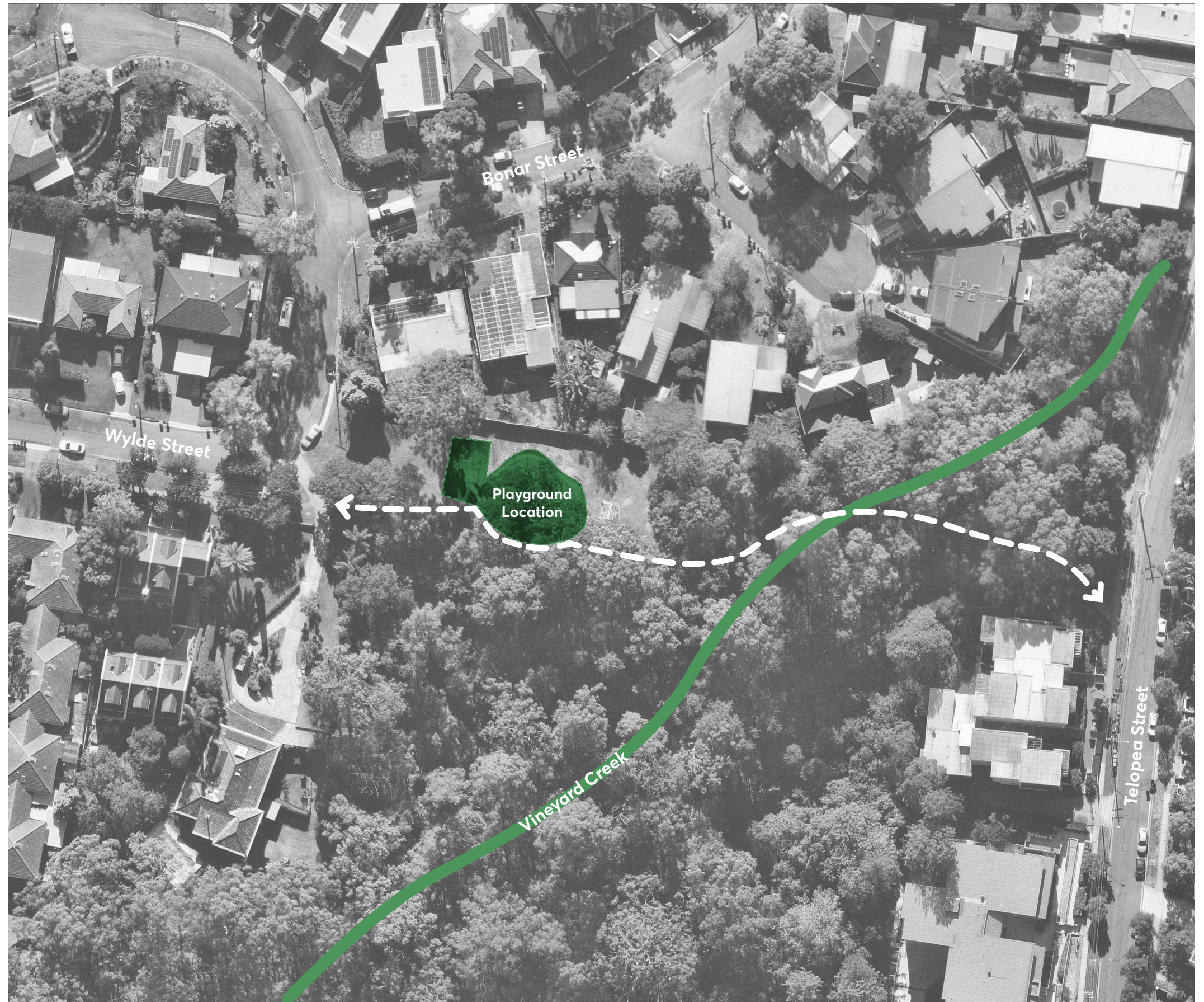
# About the project:

The **Elizabeth Macarthur Playground** is located within the Elizabeth Macarthur Reserve in Telopea.

The playground sits within a small clearing, which is connected by the Vineyard Creek Walking Track to a network of bushland corridors containing remnant and endangered vegetation.

The playground serves as a recreational area for local residents, supporting social interaction and active play for children.

With a typical lifespan of around 20 years, the playground equipment is now due for renewal to ensure it remains safe and enjoyable.





# What you told us:



## What needs improvement?

The community feedback in the first stage of consultation revealed that the current playground is outdated and in need of renewal. The main points were:

### Safety & Accessibility

- Uneven surfacing & trip hazards
- Unsafe ladders and climbing structures for toddlers

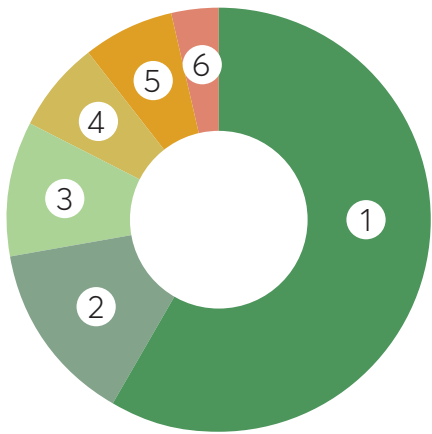
### Equipment Condition

- Outdated, rusty & broken equipment
- Limited variety for different age groups

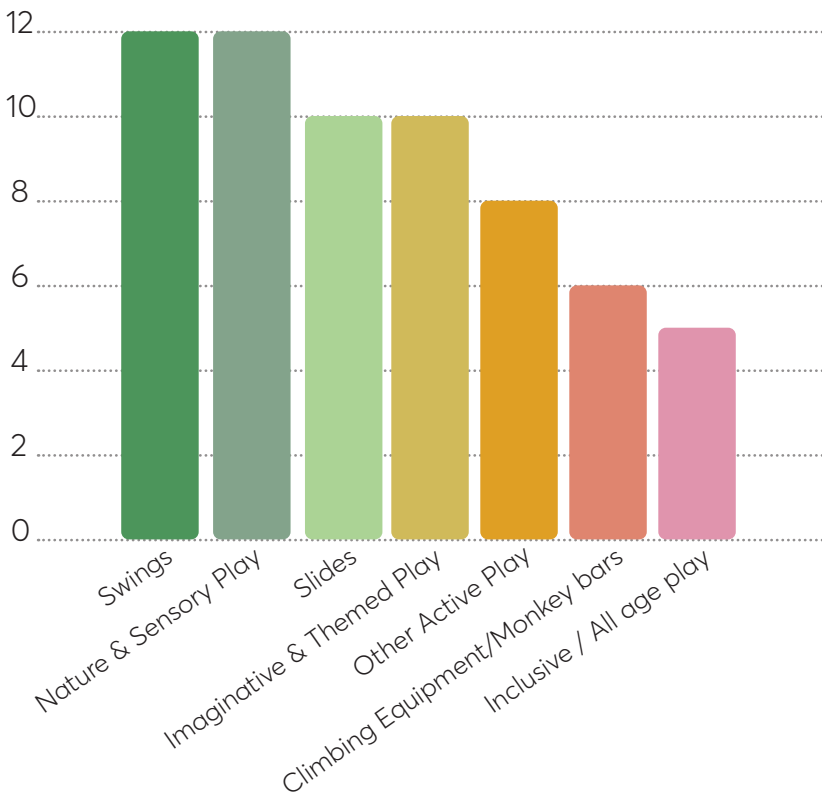
### Amenities

- No water fountains
- Lack of seating opportunities & shade

## Why are people visiting the park? What do kids want?



1. Taking kids to the playground: 58.6%
2. Walking the dog: 13.8%
3. Walking/jogging/exercising: 10.3%
4. Meeting friends: 6.9%
5. Picnics & birthday parties: 6.9%
6. Other: 3.5%





**LEGEND**

- ① Existing entry path and dinky track retained with damaged sections replaced
- ② Existing swings replaced with 3 Bay Swingset
- ③ Expanded playground footprint to connect to path & join play spaces together
- ④ Water dragon themed rocker
- ⑤ Sandstone logs with staggered heights for passive seating and play. Sandstone will feature small carved sculptures relating to the water dragon theme.
- ⑥ Combination play structure featuring a variety of play elements catering to toddlers and older children. Main features include 2x slides, rope nets & ladders, rock wall, traversing ropes & imagination play shopfront
- ⑦ New shelter and picnic setting with concrete path connection
- ⑧ New accessible seating with back and armrests
- ⑨ Proposed tree suitable for surrounding bushland
- ⑩ Existing small trees removed due to poor health and proximity to dinky track
- ⑪ Existing trees retained
- ⑫ New bin
- ⑬ Mulched garden bed with scattered native plants



# Perspective:





# Play Equipment:



1. Combination play structure



2. Swingset with basket seat, standard and toddler seat



3. Water dragon rocker



4. Water dragon themed carved sculptures in sandstone