

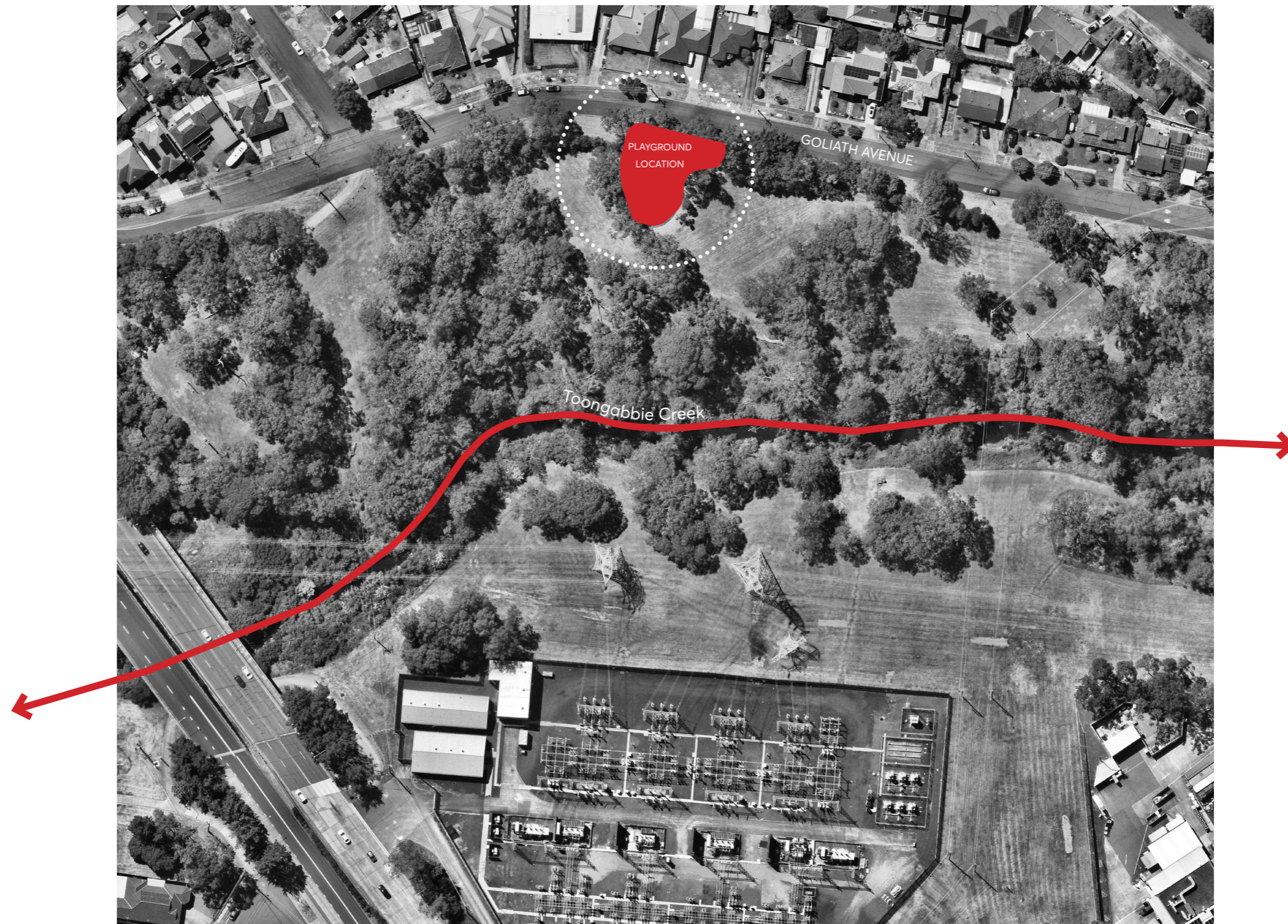


# PALESTINE PARK PLAYGROUND UPGRADE

LOCATION

# Where is Palestine Park Playground?

Palestine Park Playground is located in Palestine Park in Winston Hills. Set along Toongabbie Creek in a well shaded position near the Goliath Avenue.



## About the project

---

The playground renewal project at **Palestine Park in Winston Hills** is part of the City of Parramatta Council's broader commitment to providing high-quality play spaces across the local government area, with almost 150 playgrounds maintained to support active, social and inclusive outdoor environments.

Nestled within a quiet residential area, and framed by the natural bushland corridors along Toongabbie Creek, **the reserve offers a peaceful, green setting characterised by mature trees, open grassed areas, and the sounds of native bird life.** This tranquil backdrop **within walking distance for local residents.** Provides a sense of retreat from the surrounding urban areas, making the playground an inviting and restorative place for families.

**After approximately 20 years of service** and having reached its typical life cycle for playground equipment, the decision was made to replace and upgrade the facility to ensure safety, accessibility and ongoing enjoyment for children aged 0–12 years and their families.





# Whats involved?



## 1. Consultation

We start the design process by gathering ideas and feedback from local residents about **how they currently use the playground and what they would like to see improved**. This input helps identify community priorities and preferences for the playground.



## 2. Site Analysis

We undertake a **detailed review of the site** to understand its existing conditions, including **vegetation, topography, access, visibility, and relationship to surrounding open spaces and homes**. Together with your consultation input, this analysis informs the design's layout and opportunities for improvement.



## 3. Concept Design

Using insights from the community and site analysis, **an initial concept design is developed to illustrate how the new playground could look and function**. The design explores options for play equipment, materials, planting, and seating.

**We are here**



## 4. Consultation

The draft concept design is presented back to the community for feedback. Residents are invited to comment on the proposed layout, play elements, and overall design direction before final plans are prepared.



## 5. Detailed Design & Construction

Following the consultation phase, the design will be **refined and documented for construction**. This includes preparing detailed drawings, specifications, and coordinating approvals to ensure quality and compliance. Once construction is complete, the renewed playground will be opened to the public!

# What you told us:

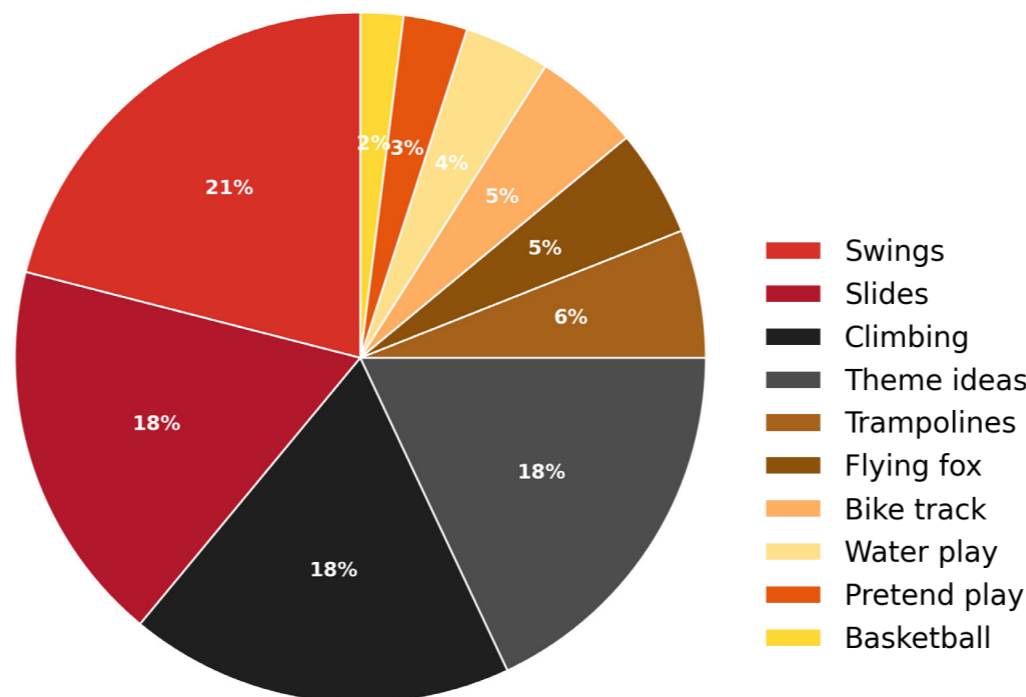


## The current playground is outdated

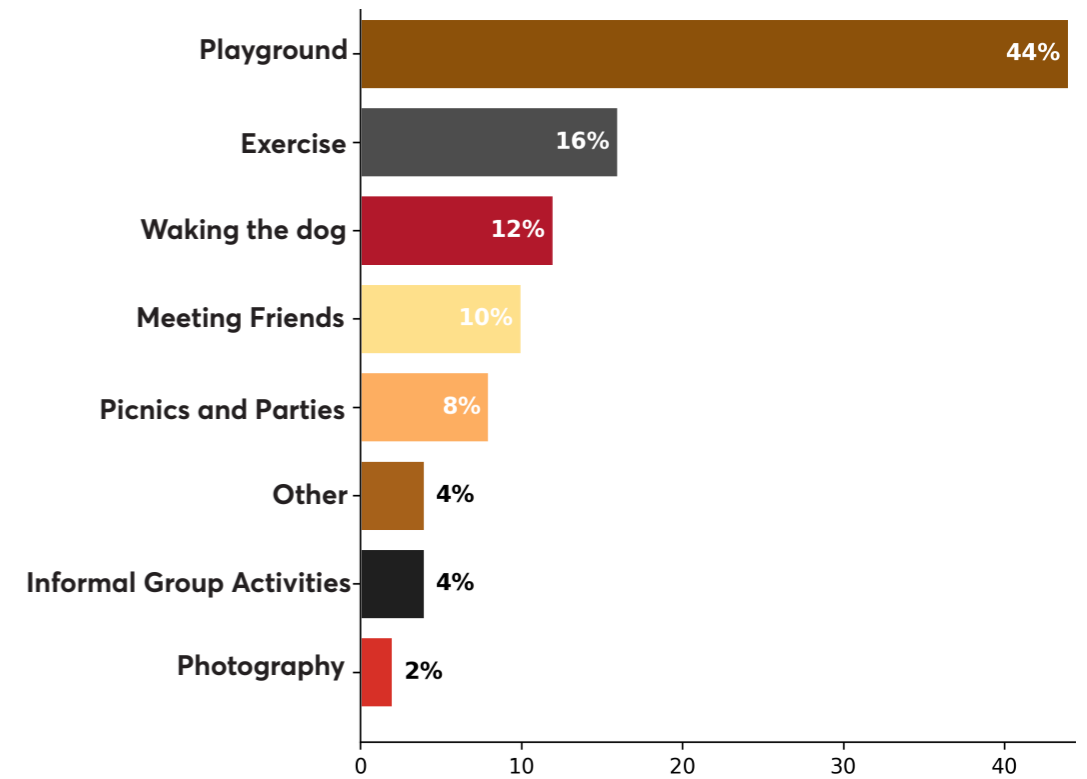
Community feedback highlighted a strong desire for the playground to be upgraded to be **safer, more inclusive, and connected to the natural environment**. Many respondents felt the current site is outdated. There were repeated calls for **new and better-quality play equipment, improved accessibility, and more facilities**.

## What do the kids want?

Children's responses revealed a clear **preference for active and themed play**. The most popular features were swings, slides, and climbing equipment.



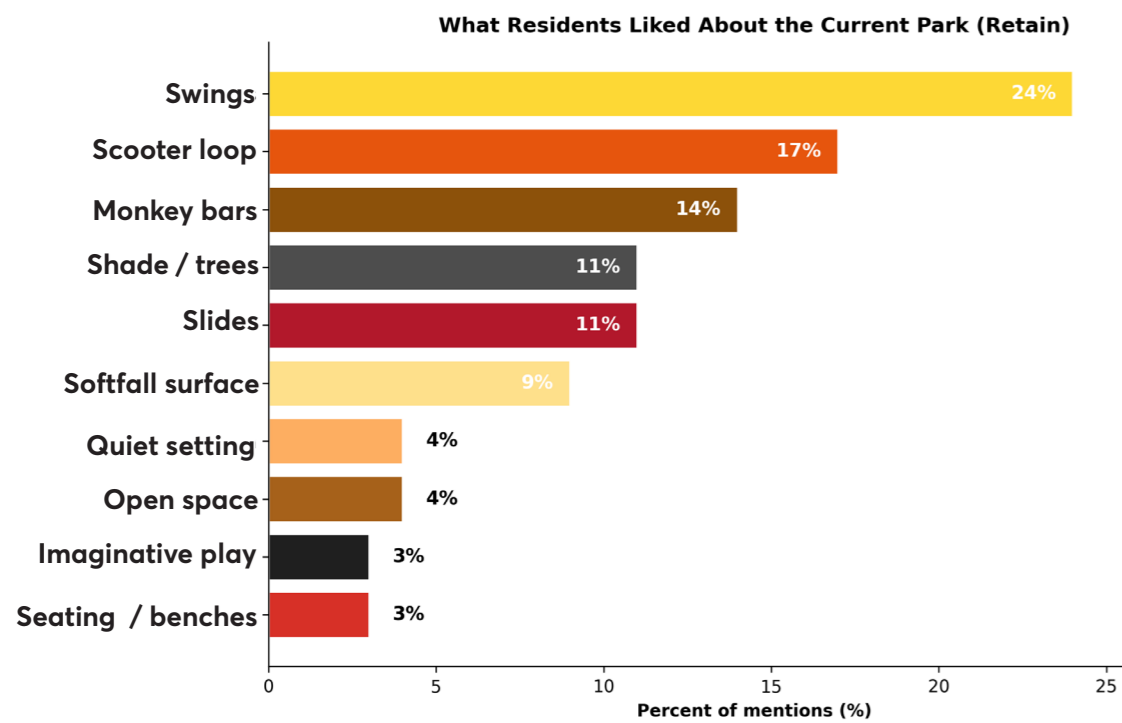
## Why do people visit the park?



# What you told us:

## What do residents like about the playground?

Residents made it clear that the existing swings, scooter loop, shade and climbing / sliding elements should be retained. Keeping the space quiet and a place to rest was also expressed.



## Playground priorities

The main playground priorities expressed in consultations were equipment upgrades, improved safety, and retaining popular features. Therefore the **playground will remain in its existing location**, citing its established quiet character and convenience. The focus is overwhelmingly on upgrading equipment, improving safety, and adding amenities.



## So whats next?

Overall, the **feedback points toward a playground that balances safety, inclusive, and imaginative fun** in a setting that feels open, social, and connected to its community, whilst being sensitive to its natural surrounds.

**We've developed a concept design with swings, opportunities for climbing, a slide and approachable play equipment to make sure that younger children are able to also play.**

The natural surroundings of Palestine Park are fantastic. **We are working with care and sensitivity to ensure that the new playground blends in with its natural setting** and is well situated on the site's topography.

**Check out our first concept design on the next page!**



GOLIATH AVENUE

PALESTINE PARK

PALESTINE PARK

**Legend**

1	Retain and protect existing remnant Cumberland Plain trees - no scheduled works within this area
2	Paved area with new bench seat, drinking fountain and bin
3	Repaint existing ouroboros snake design on pavement
4	New play equipment
5	New triple swing
6	Scooter Track retained and repainted
7	All existing trees to be retained and protected



## Concept Design

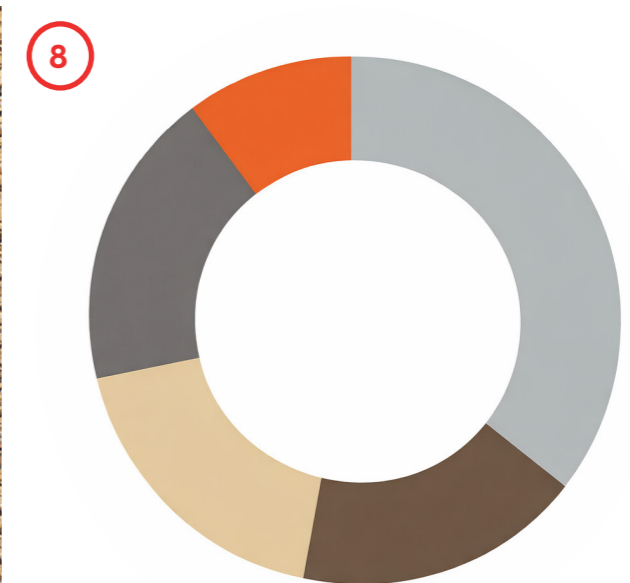
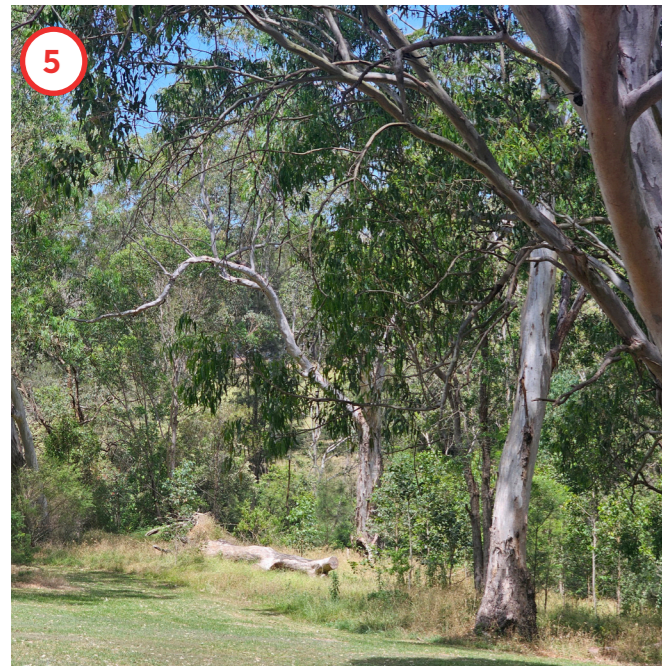
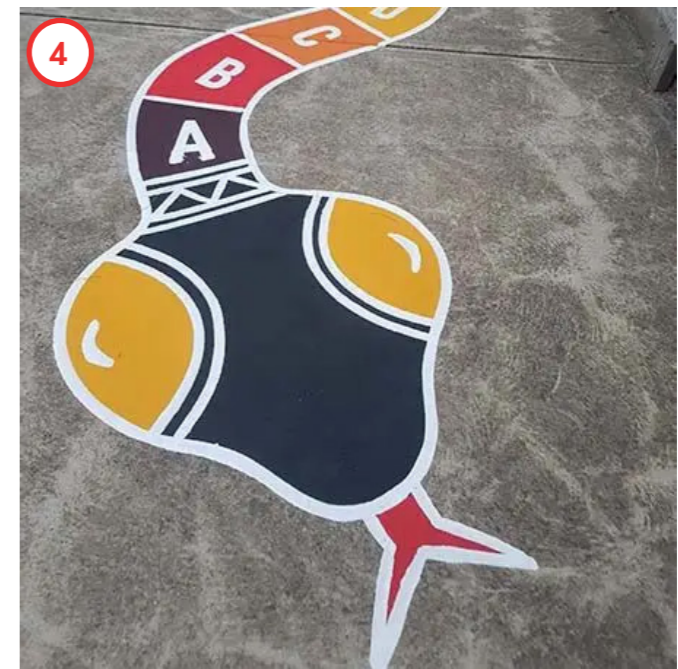
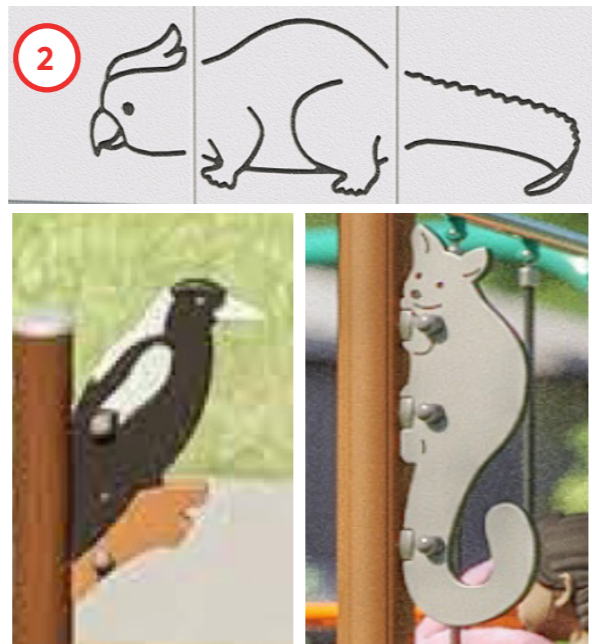
We've developed a concept design with plenty of swings, opportunities for climbing, two slides and inclusive play equipment to make sure that younger children are able to also play too.

The theme is native fauna with an animal shuffle panel and magpie motif. See if you can spot them amongst the paper bark camp colour scheme!

### Legend

- ① Boulder Wall - Climbing Play
- ② 2m Junior Monkey Bars - Climbing Play
- ③ Nature Play - Balance and stepper play
- ④ Spider Web - Agility / Climbing Play
- ⑤ Single Open Toddler Slide - Slide Play
- ⑥ Triple Swing - Swing Play
- ⑦ Tube Slide Spiral - Slide Play
- ⑧ Shop - Pretend Play

MATERIALS AND FINISHES



**Legend**

- |  |  |
|--|--|
| <ul style="list-style-type: none"> <li><span style="border: 1px solid red; border-radius: 50%; padding: 2px 6px;">1</span> Informal Nature Play elements</li> <li><span style="border: 1px solid red; border-radius: 50%; padding: 2px 6px;">2</span> Native animal play elements</li> <li><span style="border: 1px solid red; border-radius: 50%; padding: 2px 6px;">3</span> Proposed equipment colours and finishes</li> <li><span style="border: 1px solid red; border-radius: 50%; padding: 2px 6px;">4</span> Proposed footpath artwork (ouroboros)</li> </ul> | <ul style="list-style-type: none"> <li><span style="border: 1px solid red; border-radius: 50%; padding: 2px 6px;">5</span> Existing park character to inform ground cover species in EEC zone</li> <li><span style="border: 1px solid red; border-radius: 50%; padding: 2px 6px;">6</span> Decomposed granite surface example</li> <li><span style="border: 1px solid red; border-radius: 50%; padding: 2px 6px;">7</span> Proposed rubber impact attenuation surface colour selection</li> <li><span style="border: 1px solid red; border-radius: 50%; padding: 2px 6px;">8</span> Proposed equipment colours and finishes</li> </ul> |
|--|--|

ARTISTS IMPRESSIONS



ARTISTS IMPRESSIONS



ARTISTS IMPRESSIONS



ARTISTS IMPRESSIONS



ARTISTS IMPRESSIONS



