

# WELCOME TO WENTWORTH POINT



CITY OF  
PARRAMATTA



# 1. Wall Location

## 1.1 Contextual analysis

The Wentworth Point Welcome sign is to be located within the existing road island at the intersection of Hill Road and Bennelong Parkway.

This land has an abundant number of existing services and utilities that lie beneath with only a small triangle of land available for any excavation works. This is highlighted in Figure 1-1.

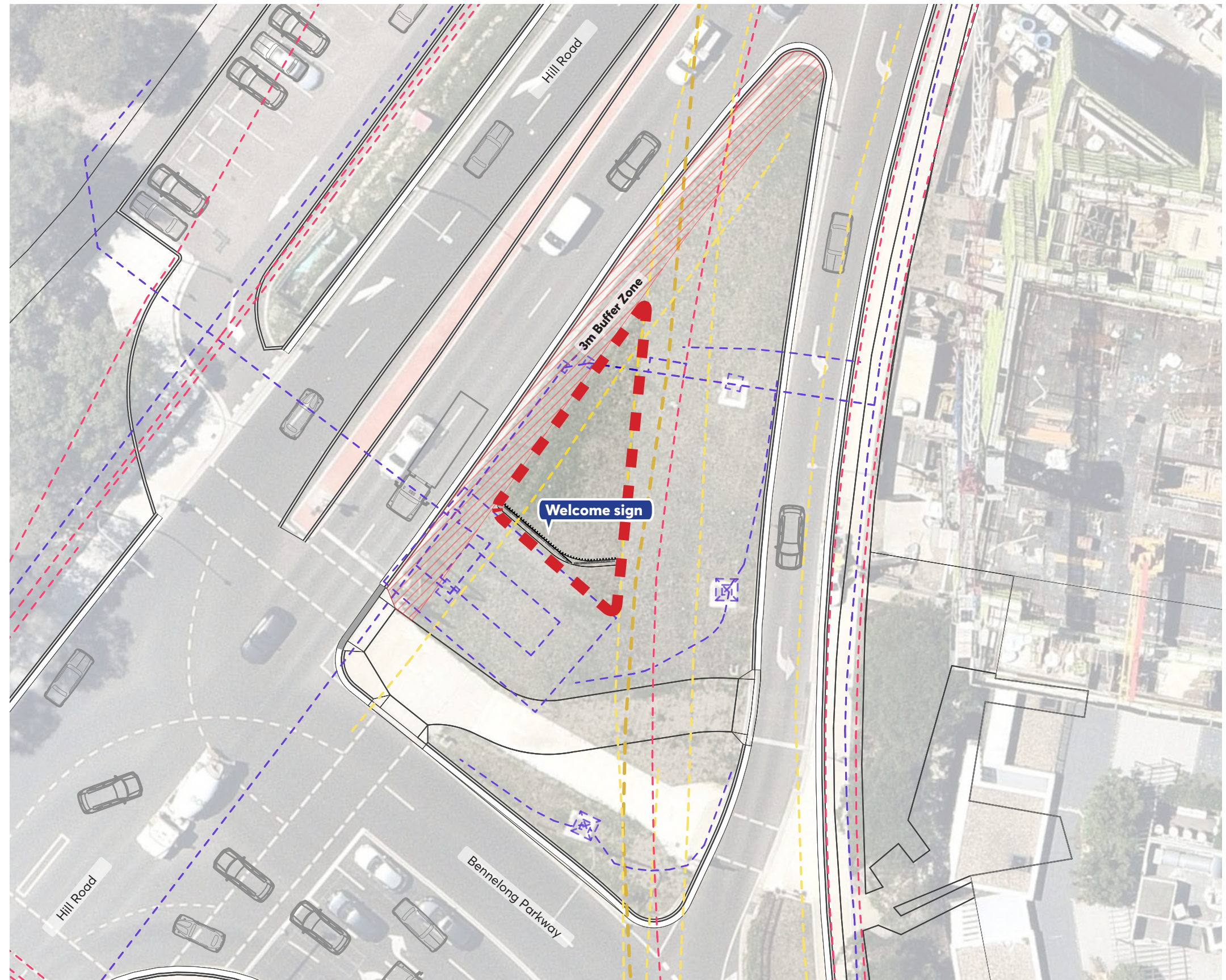


Figure 1-1: Site Context Plan



1.2 Location within road island

LEGEND	
①	View from Bennelong Parkway refer Figure 3.1
②	View from Hill Road refer Figure 3.2
③	View from Behind refer Figure 3.3

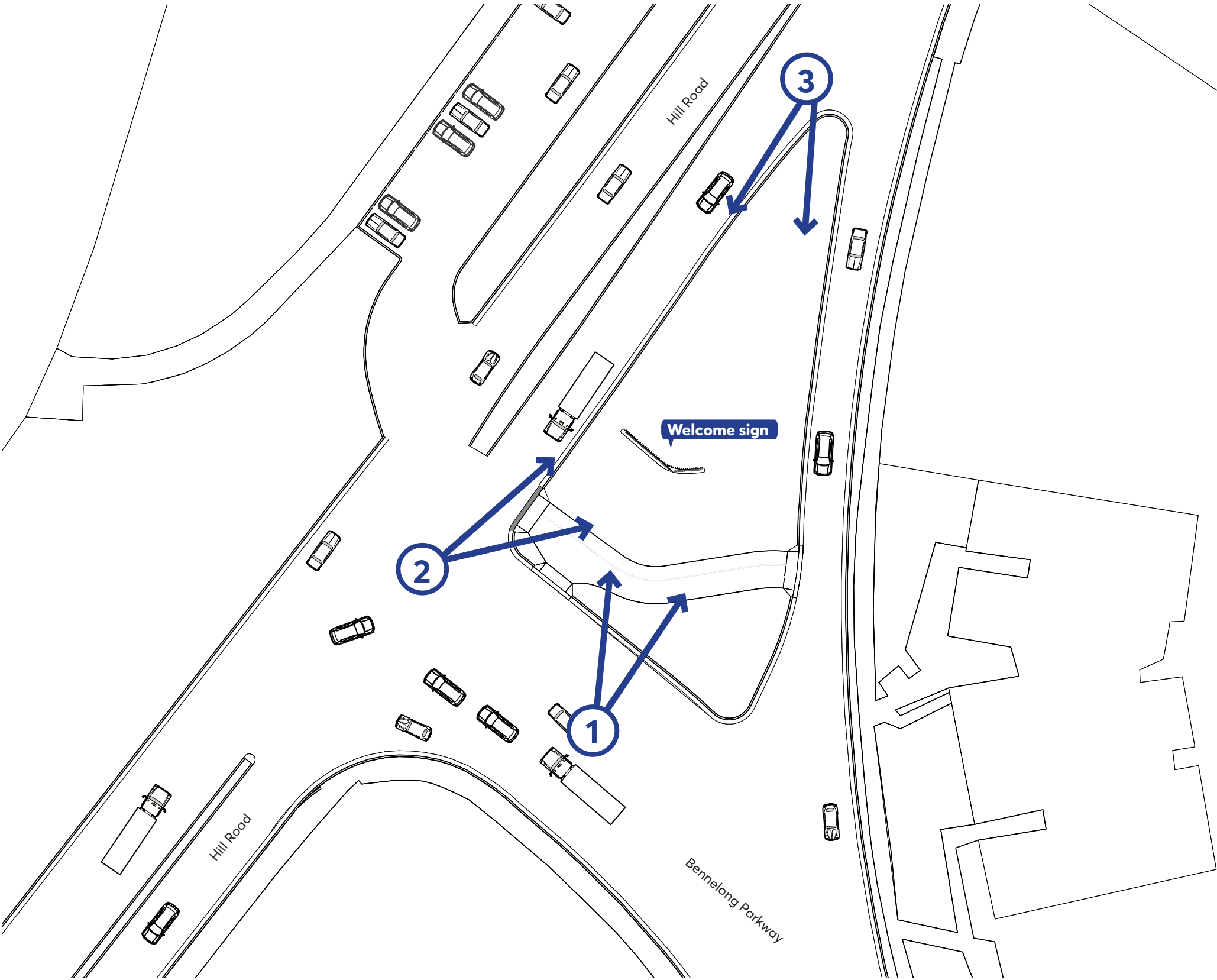


Figure 1-2: Site Plan

## 2. Wall Design

### 2.1 Signage Wall text

The Wentworth Point Welcome sign has the following suggested greeting.

**WELCOME / WARAMI / 欢迎 / 환영합니다 TO WENTWORTH POINT**  
(ENGLISH) (DHARUG) (CHINESE) (KOREAN)



Figure 2-1: Signage Text

## 2.2 Wall design

The Wentworth Point Signage wall will be a total of 10m long, 1.8m tall and 0.5m wide.

The wall has a small curve that is a nod to natural landscape of Wentworth Point. This also caters to drivers approaching from both Bennelong Parkway and Hill Road. With a flat facing wall being less noticeable.

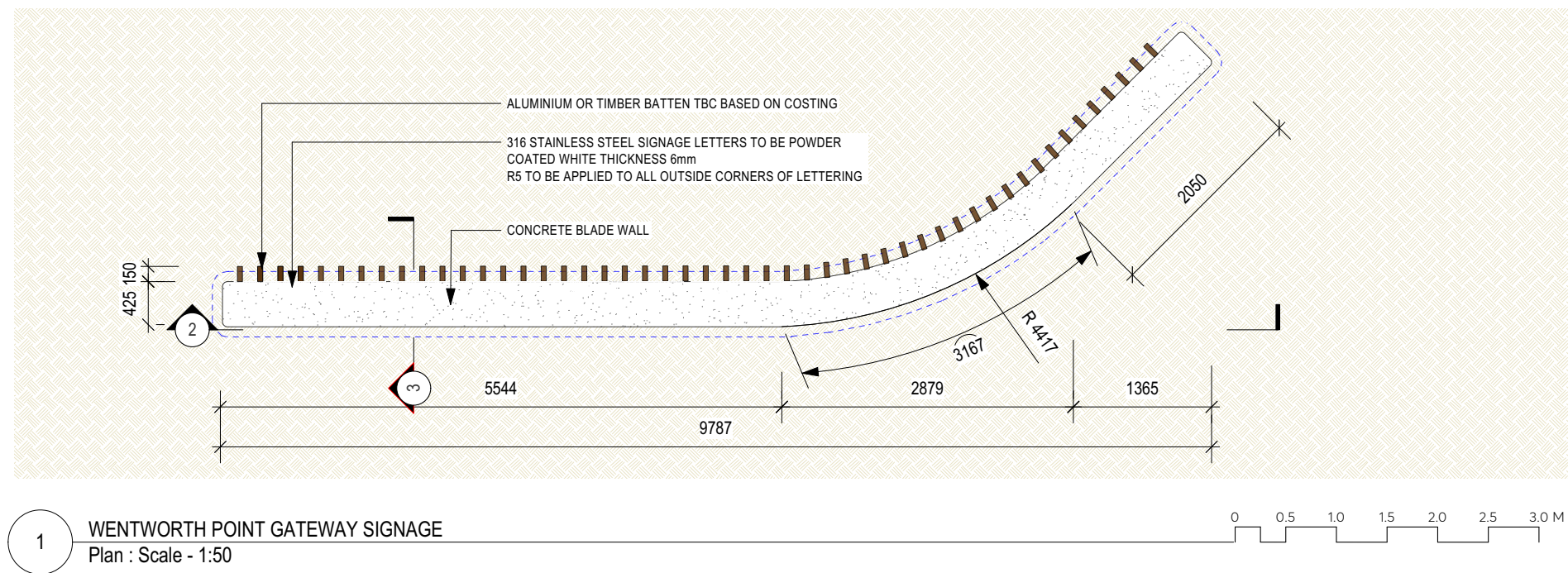
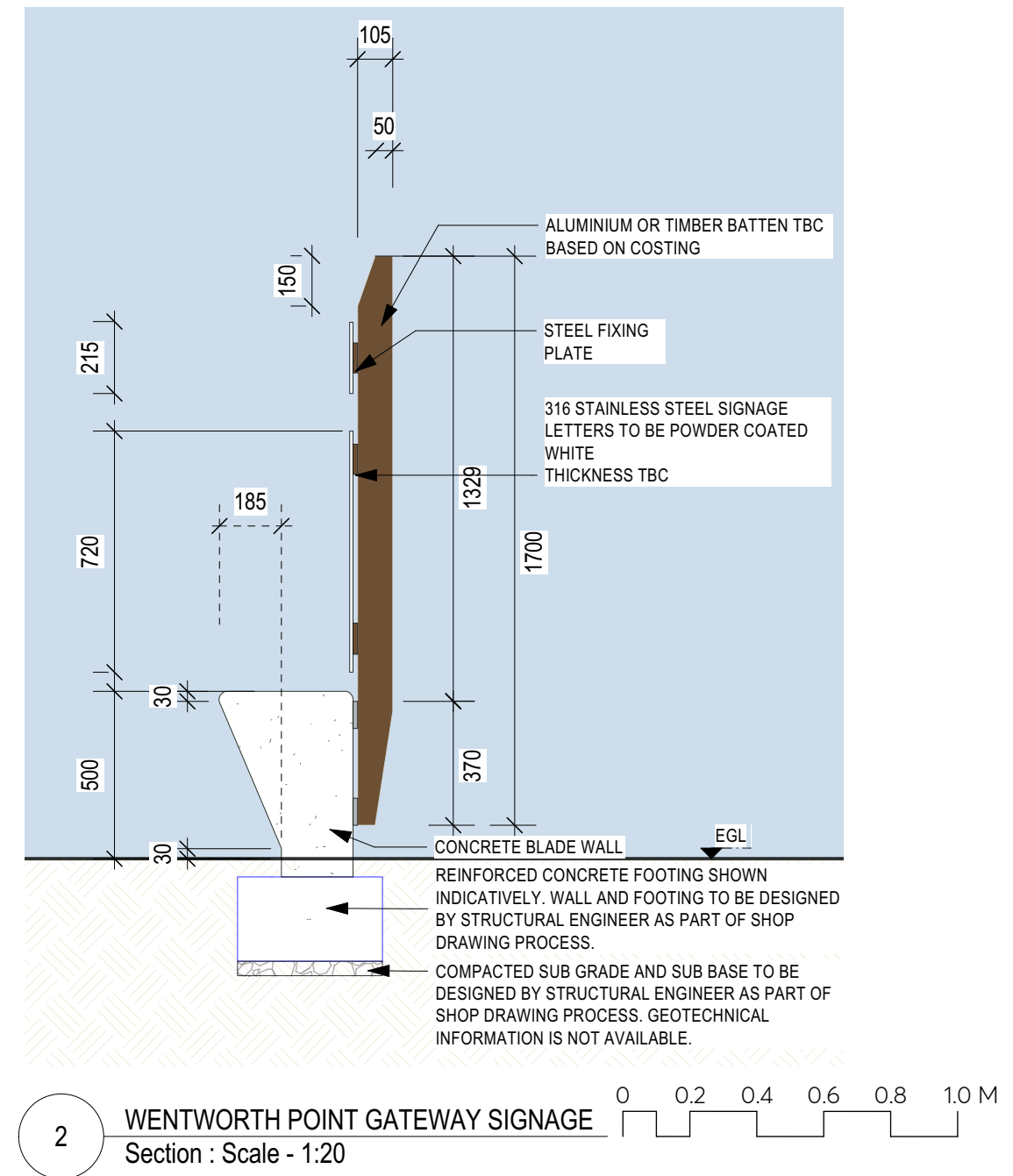
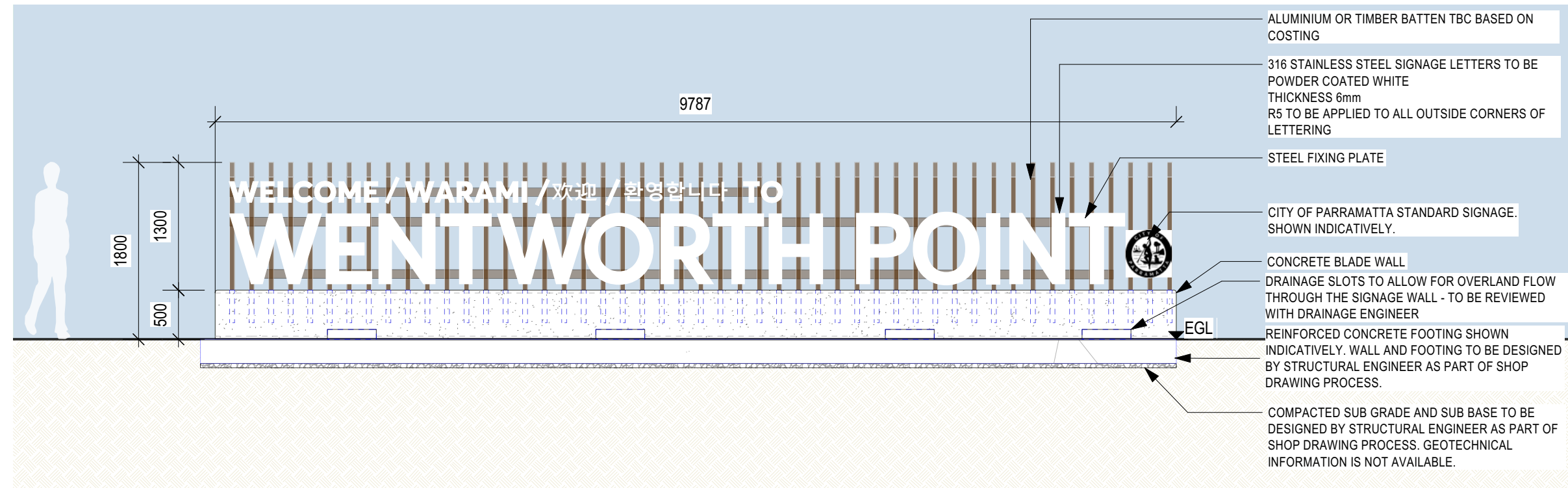


Figure 2-2: Wall Design

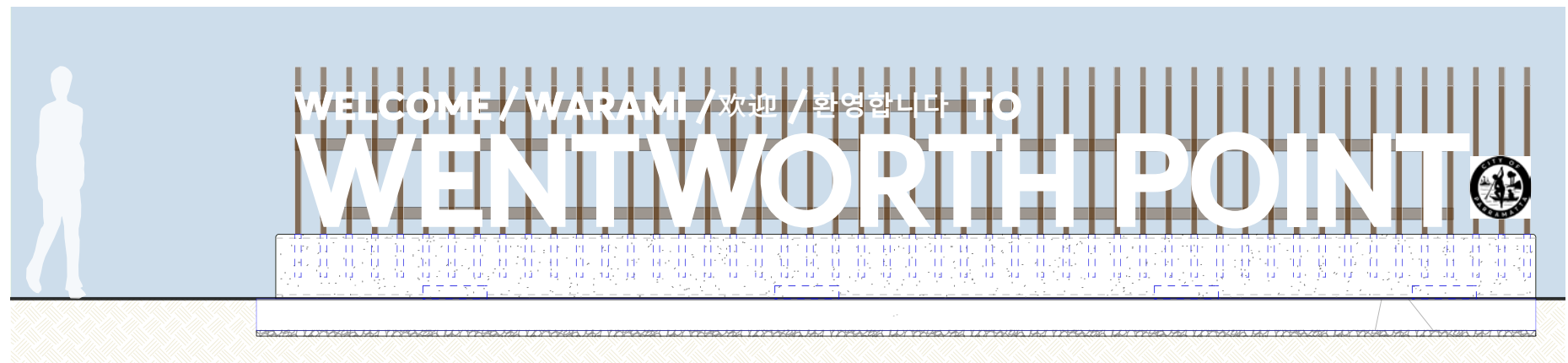


2.3 Wall design

The below design elevations demonstrates the inclusion of Dharug, English, Chinese and Korean 'Welcomes'.



2 WENTWORTH POINT GATEWAY SIGNAGE  
Elevation : Scale - 1:50



2.1 WENTWORTH POINT GATEWAY SIGNAGE  
Elevation : Scale - 1:50

Figure 2-3: Wall Design (ELEVATION)



### 3. Visualisations

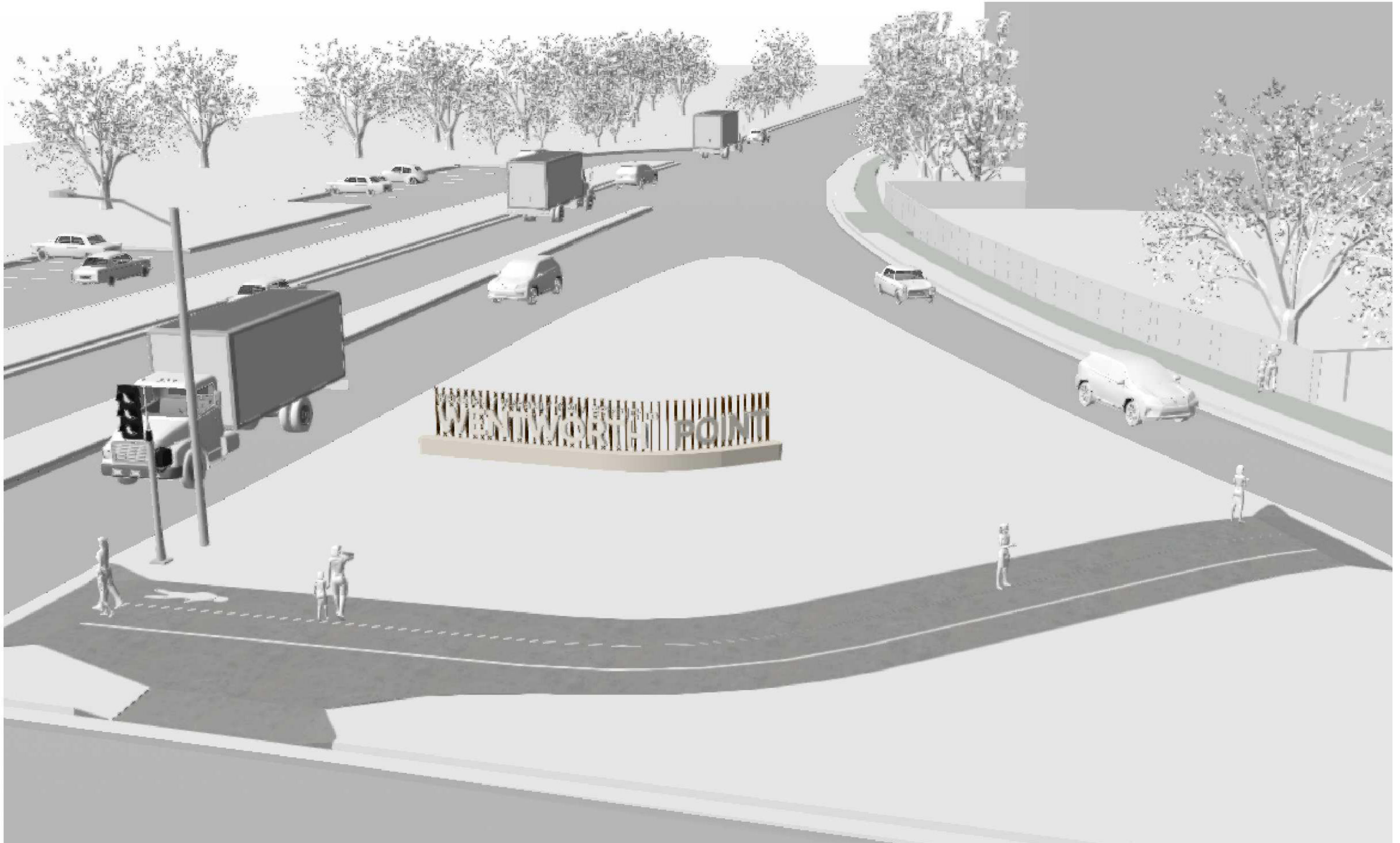


Figure 3-1: View from Bennelong Parkway

**WENTWORTH POINT ENTRY SIGNAGE // CONCEPT DESIGN**

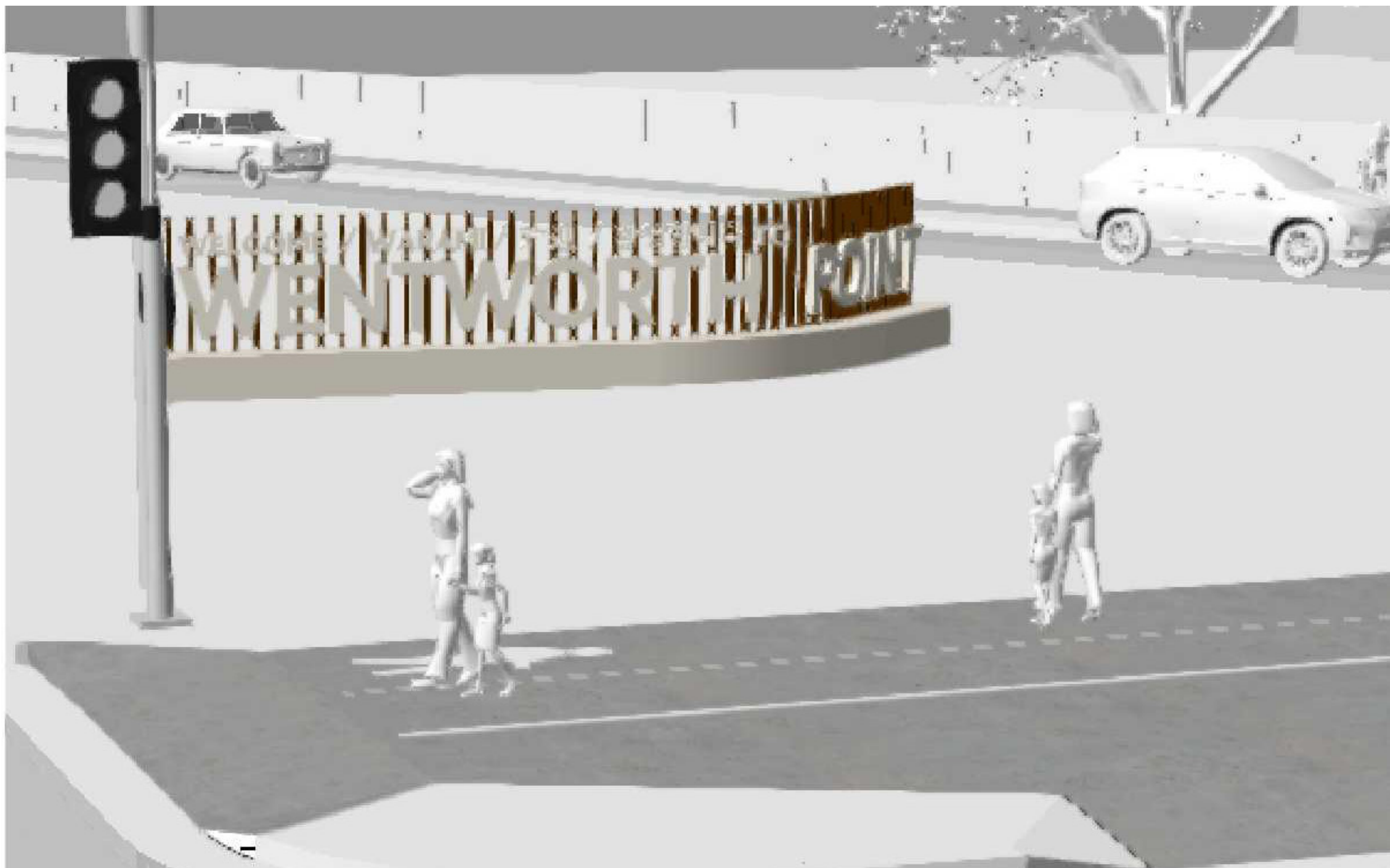


Figure 3-2: View from Hill Road

**WENTWORTH POINT ENTRY SIGNAGE // CONCEPT DESIGN**



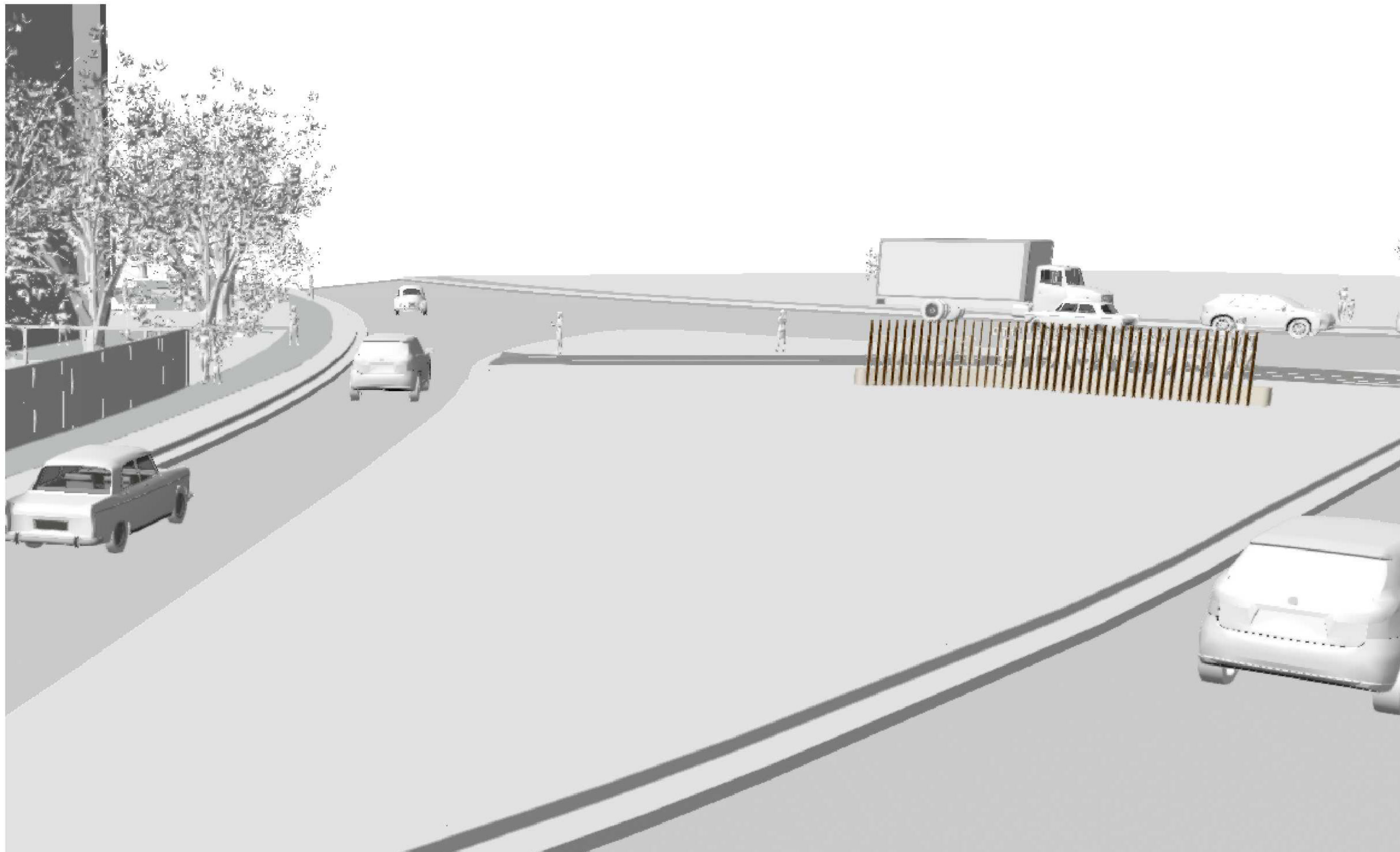


Figure 3-3: View from behind

**WENTWORTH POINT ENTRY SIGNAGE // CONCEPT DESIGN**