

HARRIS PARK

HARRIS PARK

HARRIS PARK

HARRIS PARK



INVESTING IN OUR COMMUNITIES

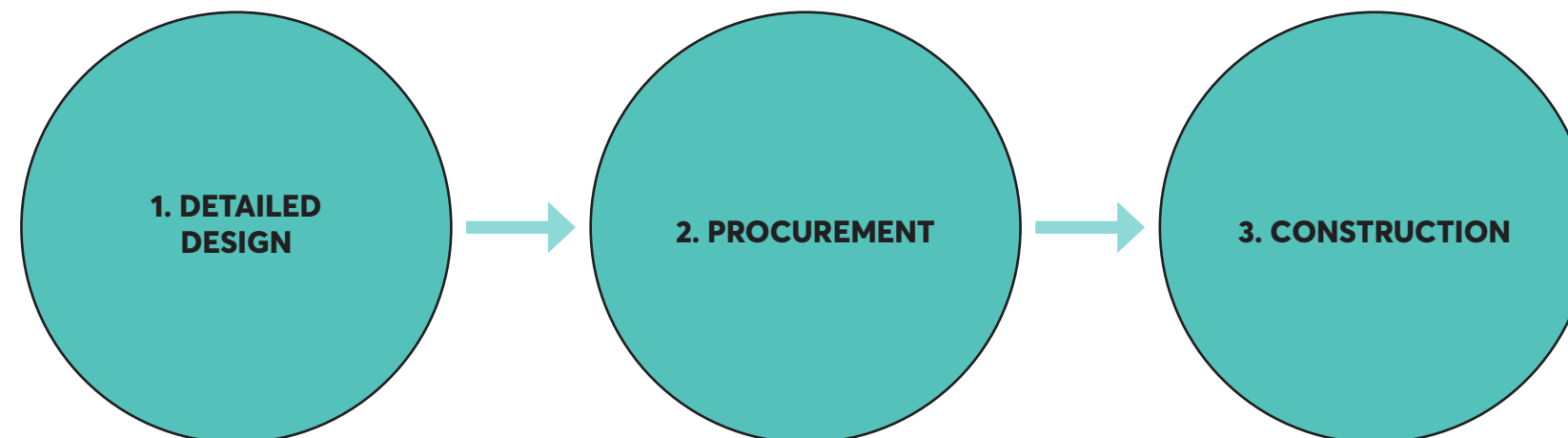
# PROJECT METHODOLOGY

The Harris Park Concept Plan has been prepared in accordance with the following methodology:

## DESIGN DEVELOPMENT



## CONSTRUCTION PHASE



↑  
**WE ARE HERE**





# PROPOSED ARTWORK



**CITY OF  
PARRAMATTA**

**Harris Park**  
Investing in our Communities

FOR COMMUNITY CONSULTATION

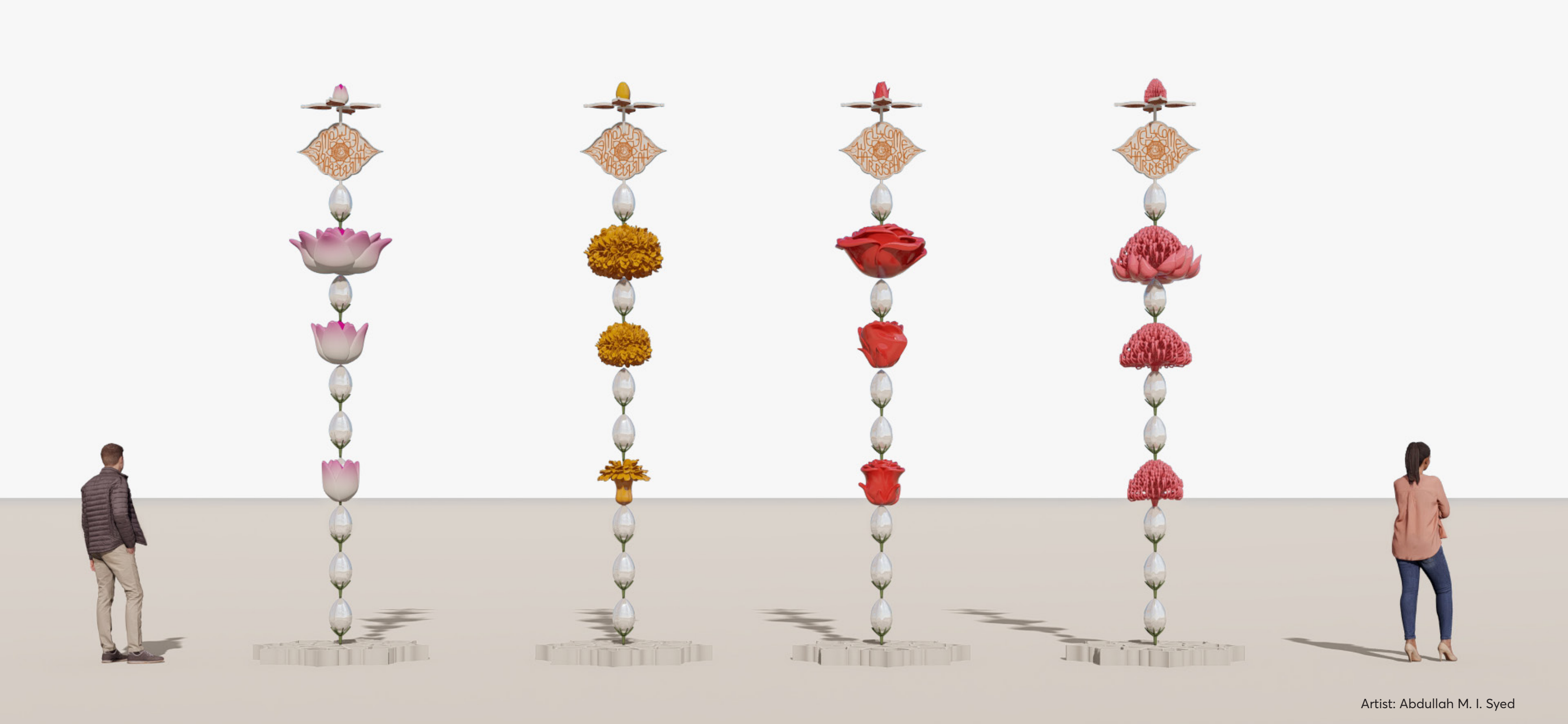
Drawn: DH  
Checked: AC

Date: JULY 2025

Revision: A



**CAPITAL PROJECTS**  
LANDSCAPE ARCHITECTURE



Artist: Abdullah M. I. Syed

## Vertical Sculptures in the form of four large pillars

A garland (mala) of 5 flower types serves as a metaphor for shared ideas and a visual language that connects the diverse and Indian cultures residing, working, and visiting Harris Park.

Garlands are symbols of purity, honour, beauty, peace, love, and passion. During special occasions, the frames of entranceways are decorated with garlands as a symbol of welcome. Flowers with significant meaning have been used in the design of the vertical sculptures are Marigolds (Gainda Phool); Roses (Gulab); Jasmine (Mogra); and Lotus, which hold significance across Indian cultures. Australia’s native Waratah flower will be integrated as a link to place, acknowledging and honouring history and heritage.

In Harris Park, these sculptures are proposed at each corner of the overhead decorative lighting, with the lighting itself representing space and light. The individual sculptures are inspired by flower garlands, traditionally used as a symbol of welcome.

The placement of these four sculptures is inspired by the stacking of decorative elements found in many cultural performances and rituals in South Asia. Individually, each of the vertical sculptures represent earth, water, fire, and air.



# Artwork Location Plan



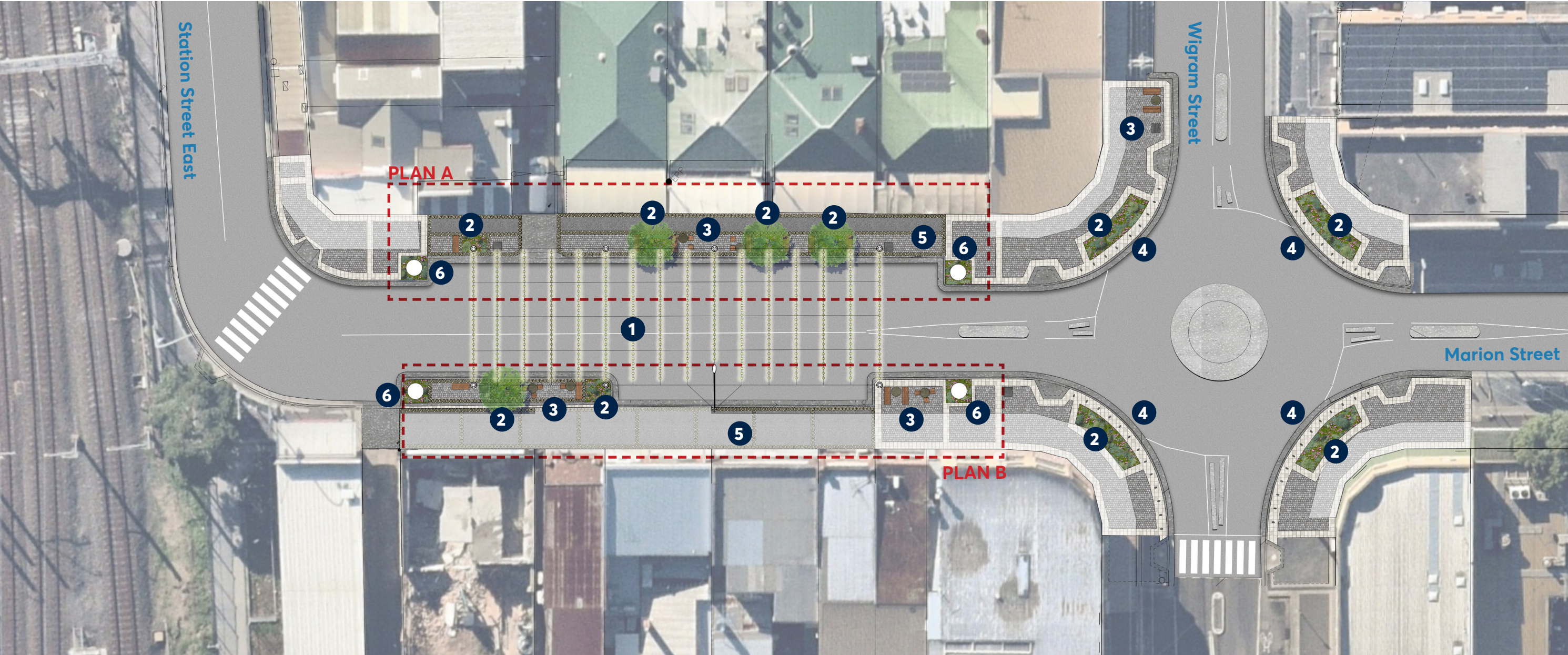




# STREETSCAPE IMPROVEMENT PLANS



# Marion Street - Detailed Concept Plan



- 1

Proposed decorative overhead lighting over street
- 2

New street tree and garden bed planting
- 3

New street furniture (seats, tables and bollards) with cultural decorative elements
- 4

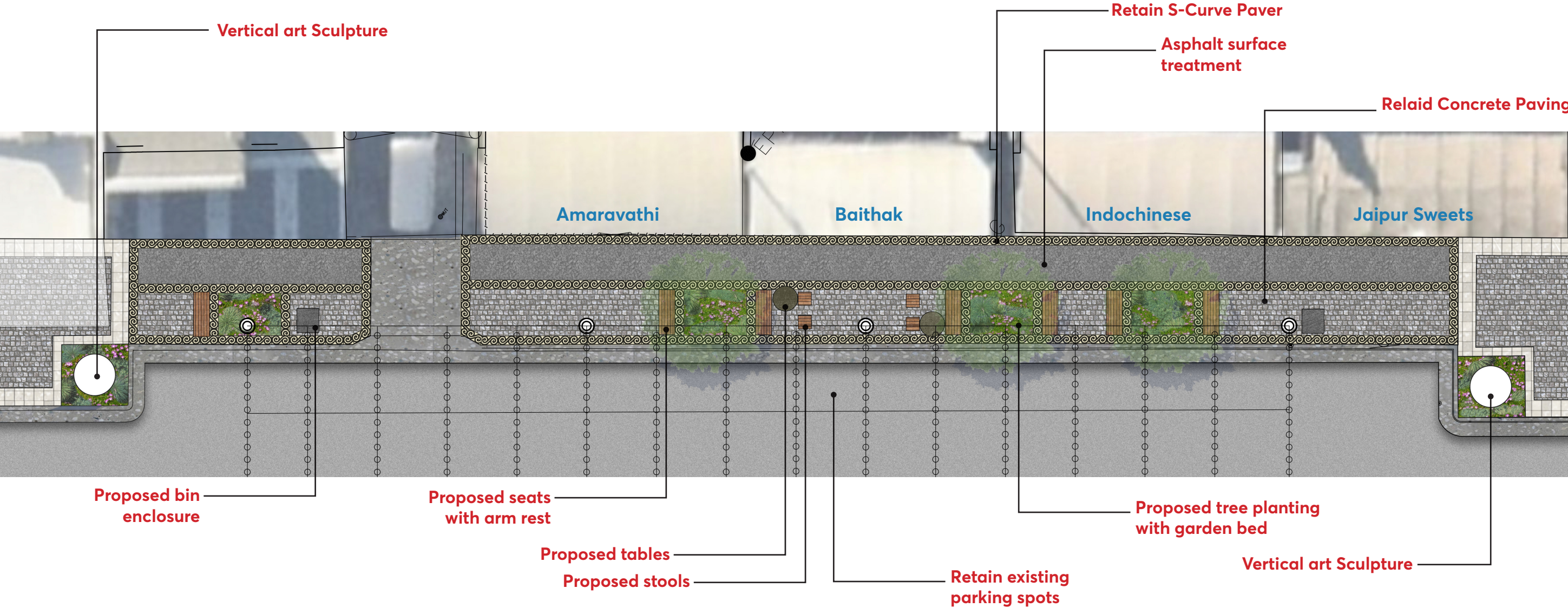
Proposed vehicle rated bollards at roundabout
- 5

Refresh existing paving
- 6

Four vertical art sculptures

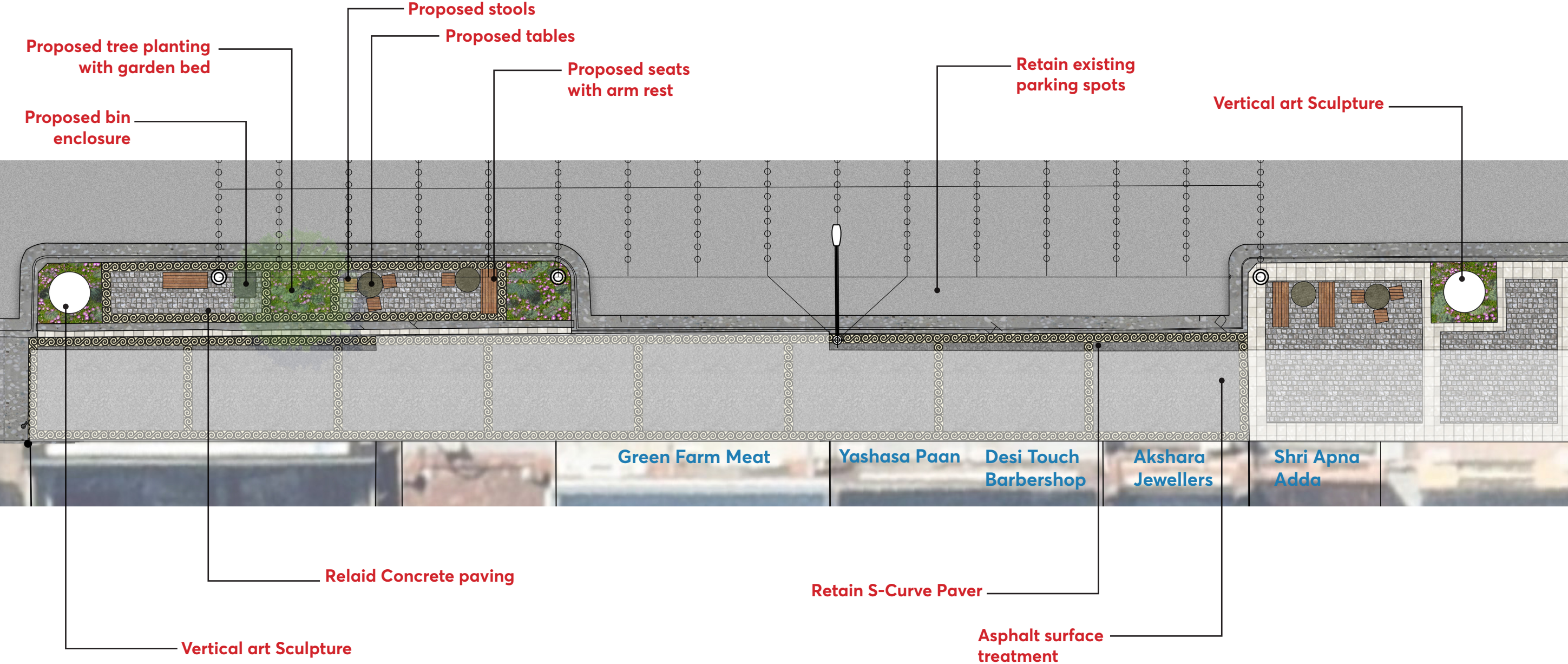


# Marion Street (Northern Side)- Detailed Plan A





# Marion Street (Southern Side) - Detailed Plan B





# Wigram Street - Detailed Concept Plan



- 1 Existing Tree to be retained
- 2 New street tree planting
- 3 New street furniture with cultural decorative elements
- 4 Existing flagpoles



# Detailed Concept Plan - Planting Palette

## Street Trees



Lophostemon confertus



Caesalpinia ferra



Tristaniopsis laurina 'Lucious'



Waterhousia floribunda 'Green Avenue'



Bunckinghamia celsissima



## Shrubs, Grasses & Groundcovers

- 1 Lomandra tanika
- 2 Dianella caerulea
- 3 Westringia fruticosa 'Mundi'
- 4 Scaevola humilis
- 5 Carpobrotus glaucescens 'Aussie Rambler'
- 6 Callistemon viminalis 'Green John'
- 7 Poa poiformis 'Kingsdale'
- 8 Hibbertia scandens
- 9 Cenchrus purpurascens 'Nafray'
- 10 Eremophila glabra prostrate 'Blue Horizon'