



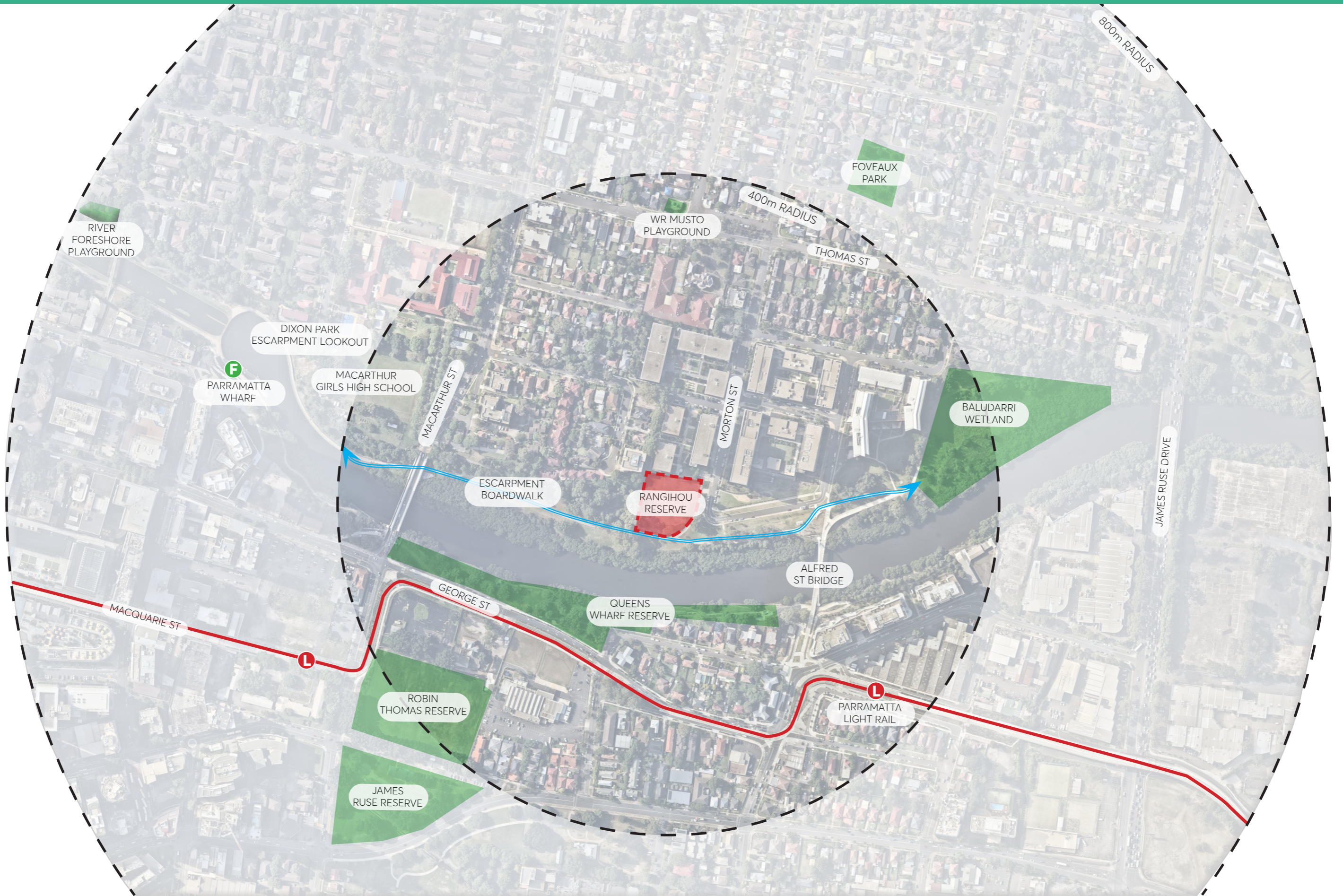
# ACTIVE YOUTH ARE HEALTHY YOUTH

Rangihou Reserve



**CITY OF  
PARRAMATTA**

# SITE CONTEXT



# EXISTING SITE CONDITIONS



# WHAT WE HEARD & PROJECT VISION



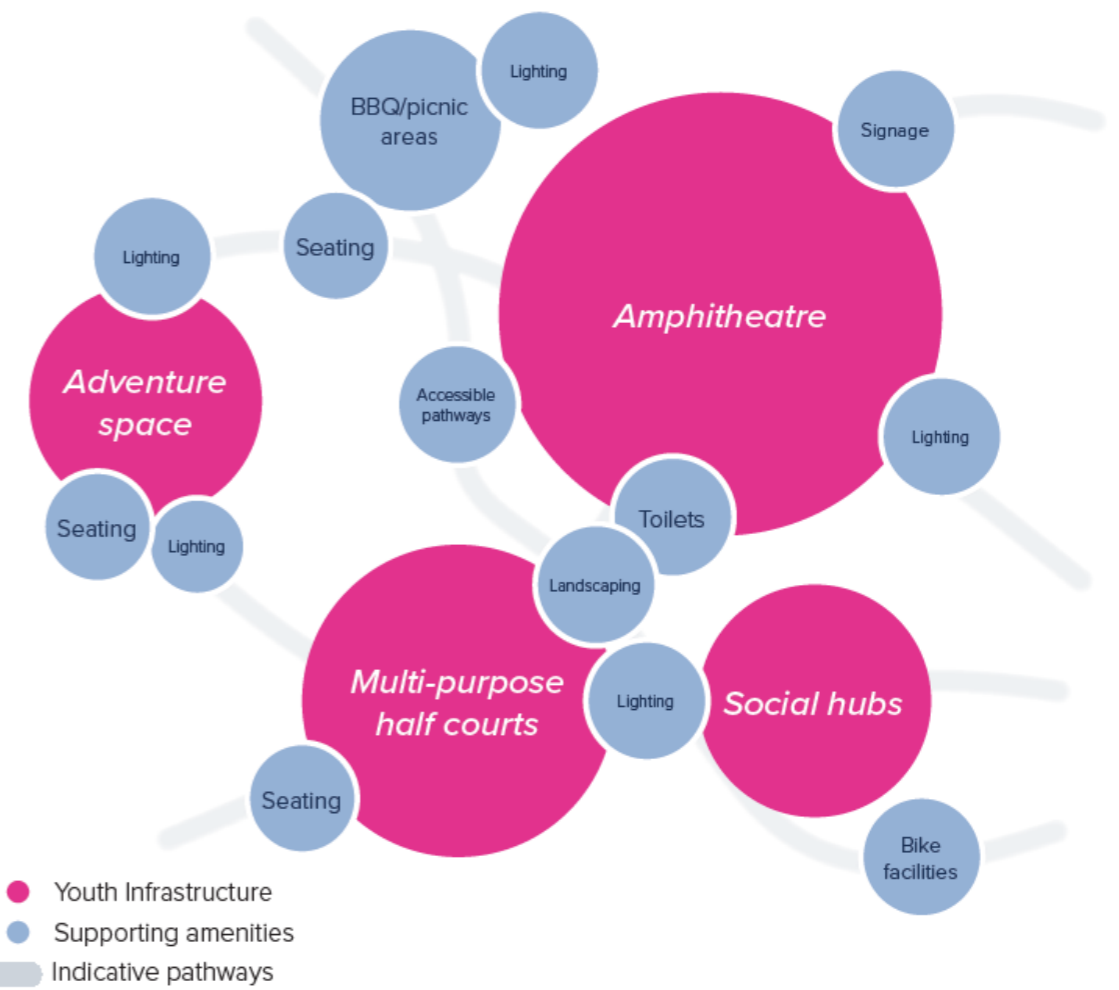
City of Parramatta's Community Infrastructure Strategy (CIS) has identified there is a shortage of youth-focused play infrastructure across the LGA. Consequently, the Active Youth are Healthy Youth project seeks to embellish youth-focused play activities in the Dundas Ward. This will be achieved through providing spaces to explore, socialise and relax, facilities that the target group genuinely enjoy and has the desire to use on a regular basis.

Community and stakeholder engagement previously conducted by Cred Consulting identified Rangihou Reserve as a suitable site due to its proximity to a well used network of green spaces. The site is also easily accessible via active and public transport, with nearby high density residential buildings offering good passive surveillance.

Guided by the voices of youth, the design elements shown to the right illustrate what the community would like, noting they are inclusive and useable by people of all ages, not just youth.

The project vision:

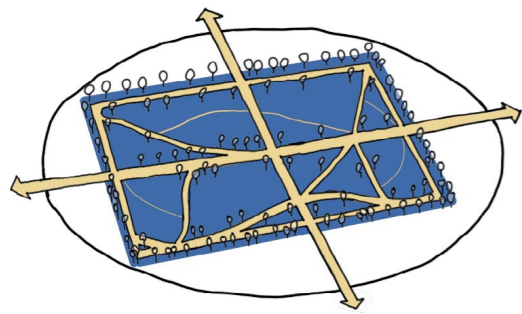
TO CREATE A **WELCOMING AND FLEXIBLE SPACE** THAT OFFERS SOMETHING FOR EVERYONE. IT WILL BE A PLACE WHERE **YOUNG PEOPLE CAN HANG OUT, BE ACTIVE, GET CREATIVE, OR JUST RELAX**. OVER TIME, IT CAN **GROW INTO A LIVELY HUB** THAT BRINGS PEOPLE TOGETHER AND REFLECTS THE ENERGY AND DIVERSITY OF OUR YOUTH COMMUNITY.



Source: Cred Consulting, 2025

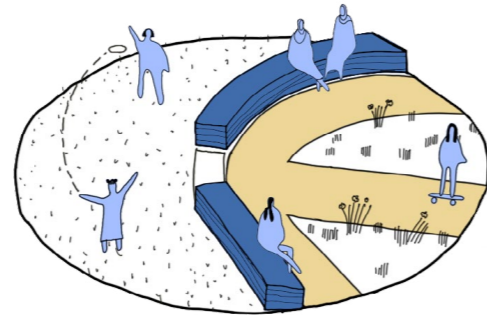
# DESIGN PRINCIPLES

## SAFE & COMFORTABLE



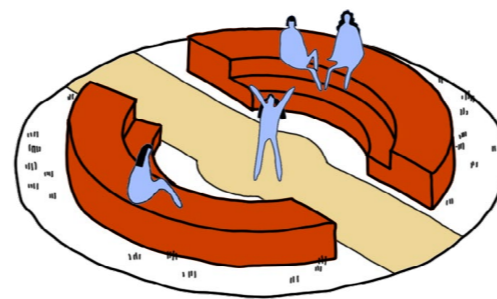
- A clear hierarchy of paths which connect with routes beyond the park.
- A choice of routes and exits to improve the feeling of safety.
- Multiple entrances that are wide and clearly visible to ensure safety good passive surveillance.
- Clear signage and wayfinding.

## FUN & PLAYFUL



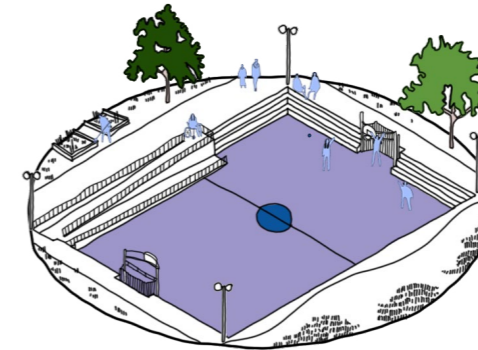
- Providing a range of spaces which can accommodate more than one group, encouraging young people to use the space in different and imaginative ways.
- Dividing large spaces into smaller areas creates a range of different places and opportunities, permitting a wider range of activities.

## INCLUSIVE & WELCOMING



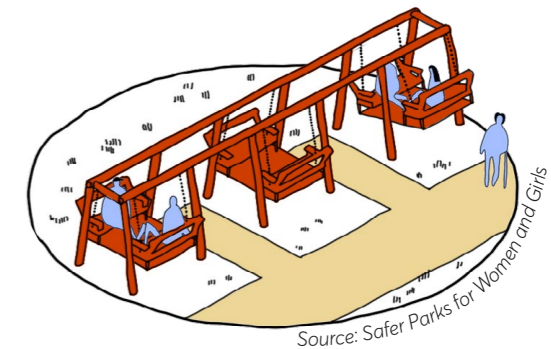
- Age appropriate opportunities for play other than sport.
- A stage area can be a community asset as well as appealing to teenage girls.

## COLOURFUL & VIBRANT



- Use of colour, art and bold design elements creates a space that feels exciting and expressive.

## ACTIVATED & ENGAGED



- Creating opportunities for social interaction, informal gatherings or events.
- Engagement with the community throughout the design process fosters a sense of ownership and belonging with the space.

# CONCEPT DESIGN



## LEGEND

- ① Proposed planting to provide buffer from residential buildings
- ② Proposed open grassed area
- ③ Vehicle access & proposed driveway pavement
- ④ Proposed 1.5m wide accessible pedestrian pavement
- ⑤ Existing trees to be retained
- ⑥ Proposed concrete terraces with steps and granite paving
- ⑦ Proposed shade shelter with social seating opportunities
- ⑧ Proposed garden bed with shade trees
- ⑨ Proposed 'stage' space with coloured linemarking
- ⑩ Multi-purpose half court with basketball & pickleball linemarking
- ⑪ 'Ninja warrior' style obstacle course
- ⑫ Proposed path to connect into cyclist & pedestrian paths

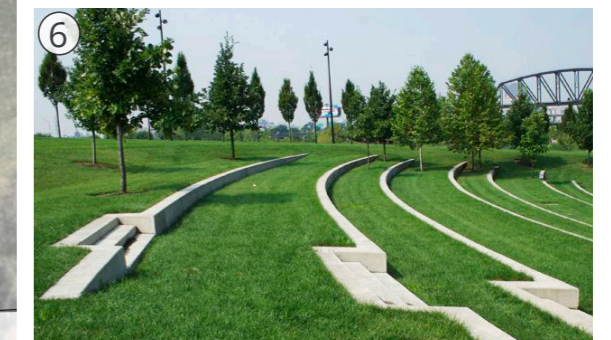
NOTE: IMAGES ARE INDICATIVE ONLY.



Moore Park Beach Parklands, source: GX Outdoors

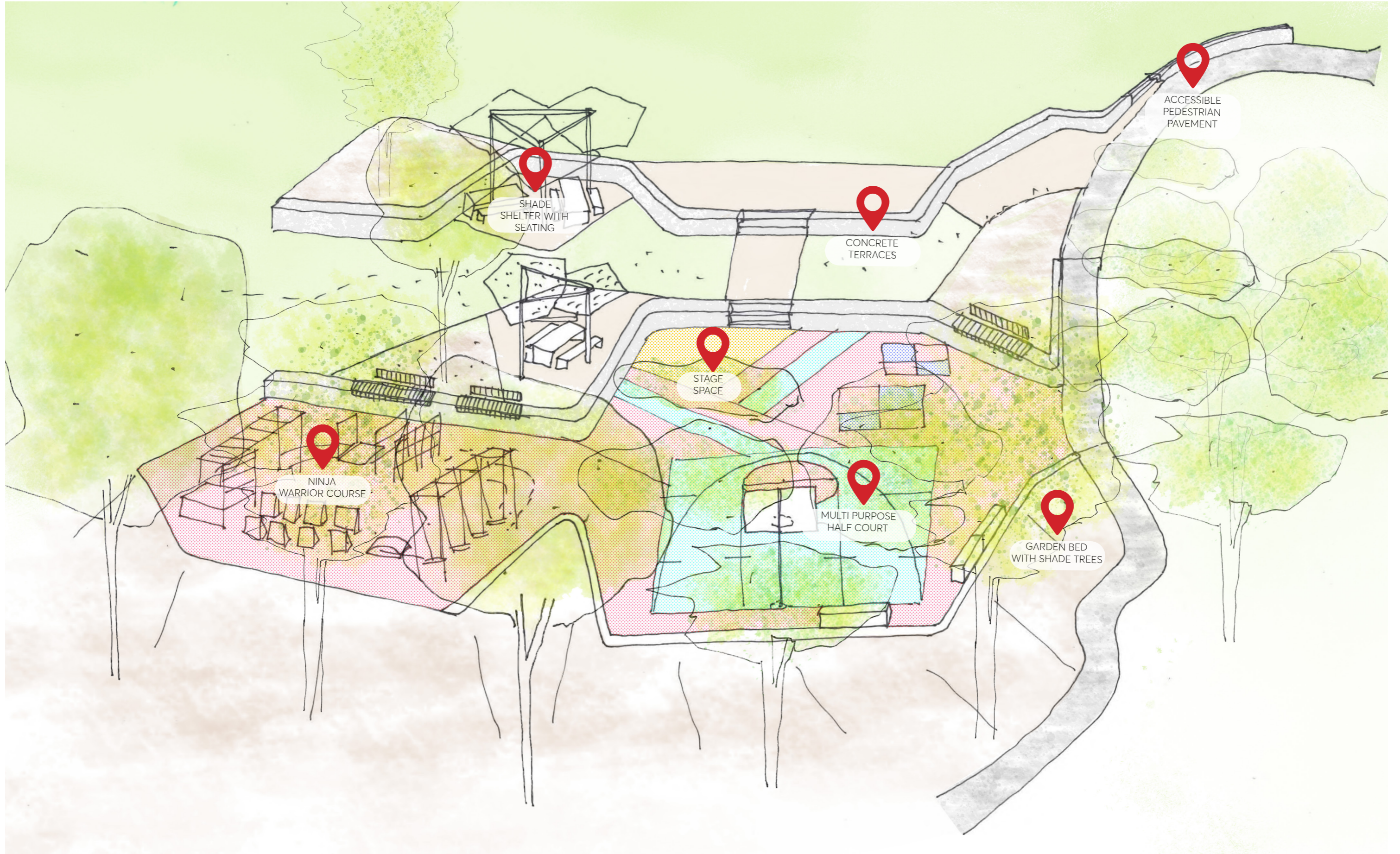


Source: Urban Spark Studio



Brown-Forman Amphitheatre, source: Pinterest

# CONCEPT DESIGN



# NINJA WARRIOR COURSE INDICATIVE IMAGES



Joondalup Park, source: Outdoor Design Source



Keilor Park, source: Melbourne Playgrounds



Brickpit Park, source: Moduplay



Warril Parkland, source: Brisbane City Council



Lake Monger Reserve, source: Moduplay